

ROAD SAFETY QUIZ 5

QUESTIONS

Question 1

What must you do at a STOP sign?

- Stop at least two metres before the sign
- Stop and give way to all traffic on the crossroad
- Slow down and be prepared to stop if any traffic is approaching

Question 2

Which of the following statement is correct?

- Passengers in vehicles are less likely to be injured in a crash if they are wearing seatbelts
- The nature of injuries in motor vehicle accidents is not related to the wearing of seatbelts
- Passengers in the rear seats of vehicles are not required to wear seat belts

Question 3

Are passengers allowed to travel in the back of a ute or in an open load space?

- Yes, if the vehicle does not exceed 60km/h
- Yes, provided they are seated
- No

Question 4

Can medication used for colds or travel sickness affect your driving?

- No
- Yes
- No, unless it has been prescribed by a doctor

Question 5

When is a driver allowed to drive without a seat belt?

- When reversing a vehicle
- When aged 65 years and over
- When the driver is pregnant

Question 6

Which of the following is greater?

- Your braking distance
- Your stopping distance
- Your reaction distance

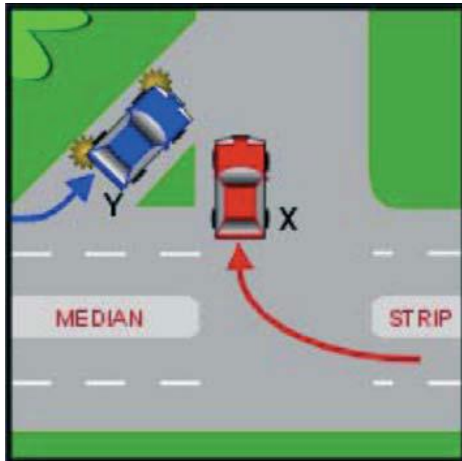
Question 7

How should you apply your brakes when driving in wet weather?

- Carefully, to avoid skidding
- Heavily, to dry them out
- Sharply, so that you can grip the road

Question 8

Which vehicle must give way?



- Vehicle X
- Vehicle Y
- Neither vehicle has to give way

Question 9

On an unmarked road, what position must your vehicle be in if you are not preparing to turn or overtake?

- Any position, providing there is no traffic
- Near the centre of the road
- Close to the left-hand side of the road

Question 10

When should you dip your headlights?

- When you are within 50 metres of a vehicle
- When you are within 200 metres of a vehicle
- When you are dazzled by the lights of an on-coming vehicle

Question 11

Who must give way?



- The pedestrian X
- Vehicle Y
- Neither has to give way

Question 12

About how long does it take an alert driver to react to an emergency?

- On tenth of a second
- 10 seconds
- At least one second

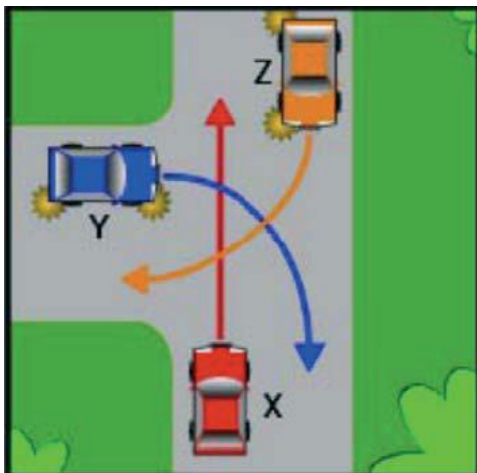
Question 13

Does drinking alcohol and driving increase the risk of having a crash?

- Yes
- No
- No, providing you drink coffee before you drive

Question 14

Which of the following statements is correct?



- Vehicle Y gives way to both X and Z
- Vehicle X gives way to both Y and Z
- Vehicle Z gives way to both X and Y

Question 15

What must you do before pulling out from a parked position at a kerb?

- Check your mirror, blind spot and indicate before you pull out
- Sound your horn
- Adjust your passenger-side external mirror

ANSWERS

1. Stop and give way to all traffic on the crossroad
2. Passengers in vehicles are less likely to be injured in a crash if they are wearing seatbelts
3. No
4. Yes
5. When reversing a vehicle
6. Your stopping distance
7. Carefully, to avoid skidding
8. Vehicle Y
9. Close to the left-hand side of the road
10. When you are within 200 metres of a vehicle
11. Vehicle Y
12. At least one second
13. Yes
14. Vehicle Y gives way to both X and Z
15. Check your mirror, blind spot and indicate before you pull out