

## ROAD SAFETY QUIZ 3

---

### QUESTIONS

#### Question 1

What should you do when approaching a railway crossing?

- Speed up to clear the crossing quickly
- Slow down and be prepared to stop if required
- Sound your horn

#### Question 2

Does a police officer directing traffic over-rule traffic signs and traffic lights?

- No
- Yes, if it is daylight
- Yes

#### Question 3

When approaching traffic lights, what does a red light with a green arrow (as shown in the diagram) mean?



- You may proceed in the direction of the arrow
- Stop, until all lights show green
- Proceed in any direction

#### Question 4

In which order should the vehicles process?



- Vehicle X, then Y, then Z
- Vehicle Z, then Y, then X
- Vehicle X, then Z, then Y

#### Question 5

Do you need to indicate if you are turning from a one-way street into another one-way street?

- Yes
- Yes, only if there is a vehicle behind you
- No

#### Question 6

At a railway crossing, are you allowed to cross if the train has passed, but the lights are still flashing?

- Yes
- No
- Yes, unless the crossing has boom gates

#### Question 7

If you are travelling in a lane that has a left-turn arrow marked on the road, can you drive straight ahead?

- Yes, if no other traffic is approaching
- Yes
- No

#### Question 8

How do even small amounts of alcohol affect your driving?

- By thinking you are driving better than you are
- By helping your driving ability
- By helping your judgement of speed

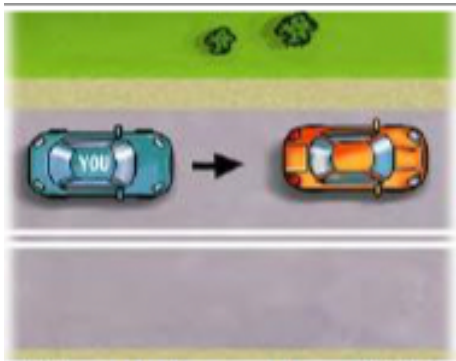
### Question 9

Which of the following statements is correct?

- It is always safe to travel at the speed limit
- Your travelling speed should be as close to the speed limit as possible
- Travelling at the speed limit is sometimes too fast for the conditions

### Question 10

Is a vehicle allowed to cross over the double unbroken white line? (as shown in the diagram)



- Yes, if the driver wishes to overtake the other vehicle
- No
- Yes, if the driver wants to make a right-hand turn or a 'U turn' and it is legal to do so

### Question 11

What is the maximum speed learner drivers (L plates) are allowed to drive?

- 110km/h
- 90 km/h
- 100km/h

### Question 12

Do you need to indicate to overtake a vehicle on an unmarked two-way road?

- Yes, only if there is a vehicle behind you
- No
- Yes

### Question 13

What is the legal blood alcohol concentration (BAC) for novice drivers?

- 0.00%
- 0.02%
- 0.05%

### Question 14

How long must you indicate before you turn left or right?

- At least 70 metres before the turn
- Long enough to give sufficient warning to other road users before you turn
- At least 10 metres before the turn

### Question 15

When approaching traffic lights, what does a green light with a red arrow mean?

- You may go in any direction other than that indicated by the arrow
- You may turn in the direction of the arrow, if it is safe to do so
- Stop, the lights are not working properly

## ANSWERS

1. Slow down and be prepared to stop if required
2. Yes
3. You may proceed in the direction of the arrow
4. Vehicle Z, then Y, then X
5. Yes
6. No
7. No
8. By thinking you are driving better than you are
9. Travelling at the speed limit is sometimes too fast for the conditions
10. Yes, if the driver wants to make a right-hand turn or a 'U turn' and it is legal to do so
11. 100km/h
12. Yes
13. 0.00%
14. Long enough to give sufficient warning to other road users before you turn
15. You may go in any direction other than that indicated by the arrow