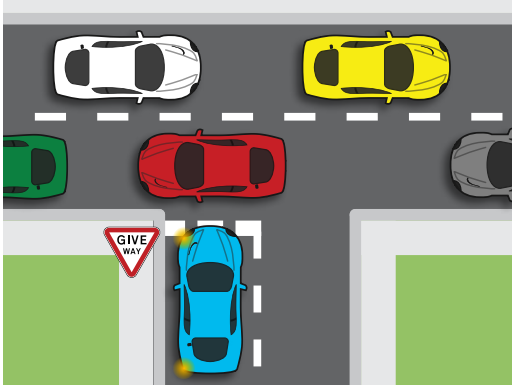


QUIZ
4

INTERSECTIONS AND TURNING

1 Write **T** (TRUE) or **F** (FALSE) next to each statement.

- A controlled intersection is an intersection that has traffic control signals.
- A police officer or other authorised person directing traffic is a 'controlled intersection'.
- A roundabout is not a controlled intersection.
- At an intersection controlled by traffic control signals, you must be prepared to stop only when the light changes to red.

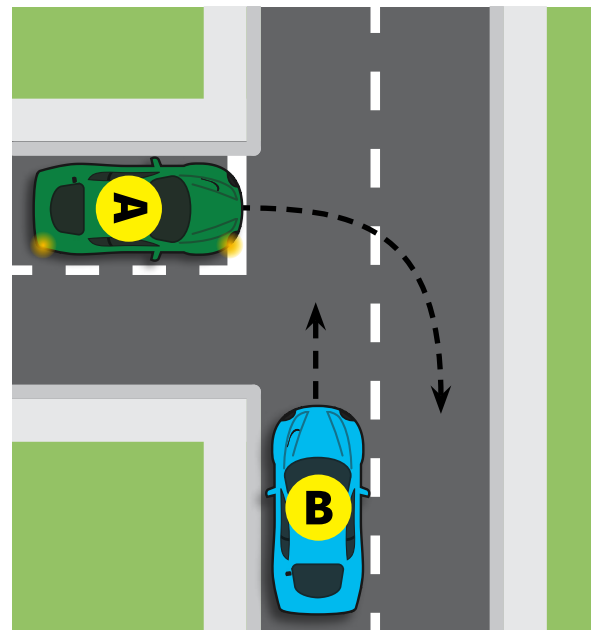


- At an intersection controlled by a GIVE WAY sign, you must give way to only the traffic travelling along or turning from the intersecting road.
- Do not enter an intersection when a queue of traffic prevents you from fully exiting on the other side.
- When you are turning left you must indicate/signal before you turn and move closer to the left side of the road.
- When turning right you must give way to pedestrians and turn only when it is safe to do so.
- You can make a U turn on the freeway.
- If you are in a lane marked with an arrow when turning at a multi-lane intersection, you must go in the direction of the arrow.

2 At an intersection controlled by a STOP sign, you must stop your car at the line. What must you do if you've stopped your vehicle slightly back from the line?

3 Which car (A or B) gives way in the below situation?

- A
- B



Answers can be found in 'Part 3 Major road rules and additional safety advice' of the Drive Safe handbook
www.transport.wa.gov.au/mediaFiles/licensing/DVS_DL_B_DriveSafeFull_f.pdf

Answers
Turn to pages 31-32 for the answers.