

# The importance of a best practice approach to drug and road safety education

**Best practice in drug and road safety education are those strategies, activities or approaches which have been shown to be effective through research and evaluation.**

## **Best practice principles:**

- provide core concepts and values to guide the planning, implementation and review of programs
- guide the development of comprehensive whole school plans
- set out the key elements for best practice in school communities
- encourage consistency between programs and within jurisdictions
- inform policy and practice and serve as a reference for diverse audiences and contexts
- ensure drug and road safety education forms part of a broader health and wellbeing focus
- provide schools with a clear guide that is relevant to their needs and individual context
- identify strengths within the school community and areas where further planning and action may be required
- ensure that resources and professional development are targeted to the key personnel within the school community
- provide young people with the best opportunity to improve their health and wellbeing.



PARENTS AND COMMUNITY

**SDERA**  
SCHOOL DRUG EDUCATION AND ROAD AWARE



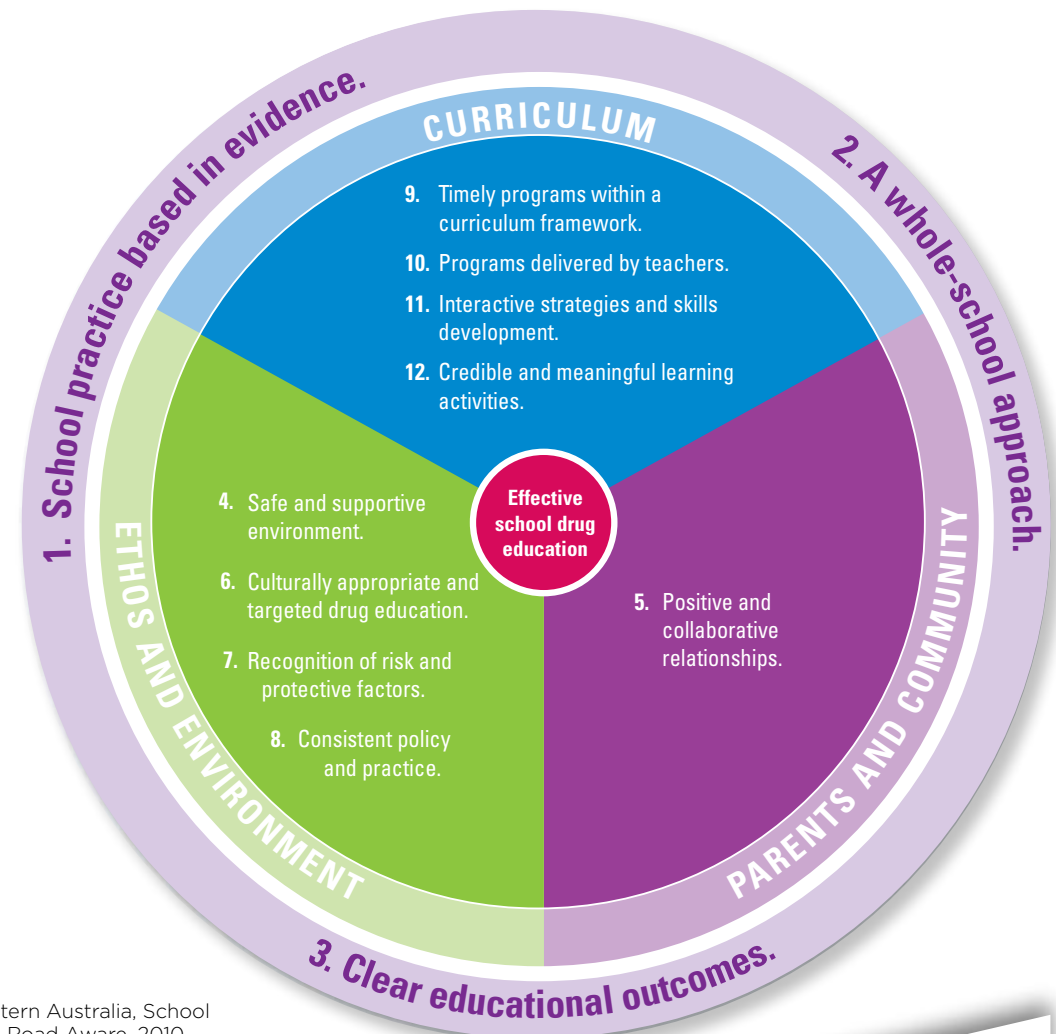
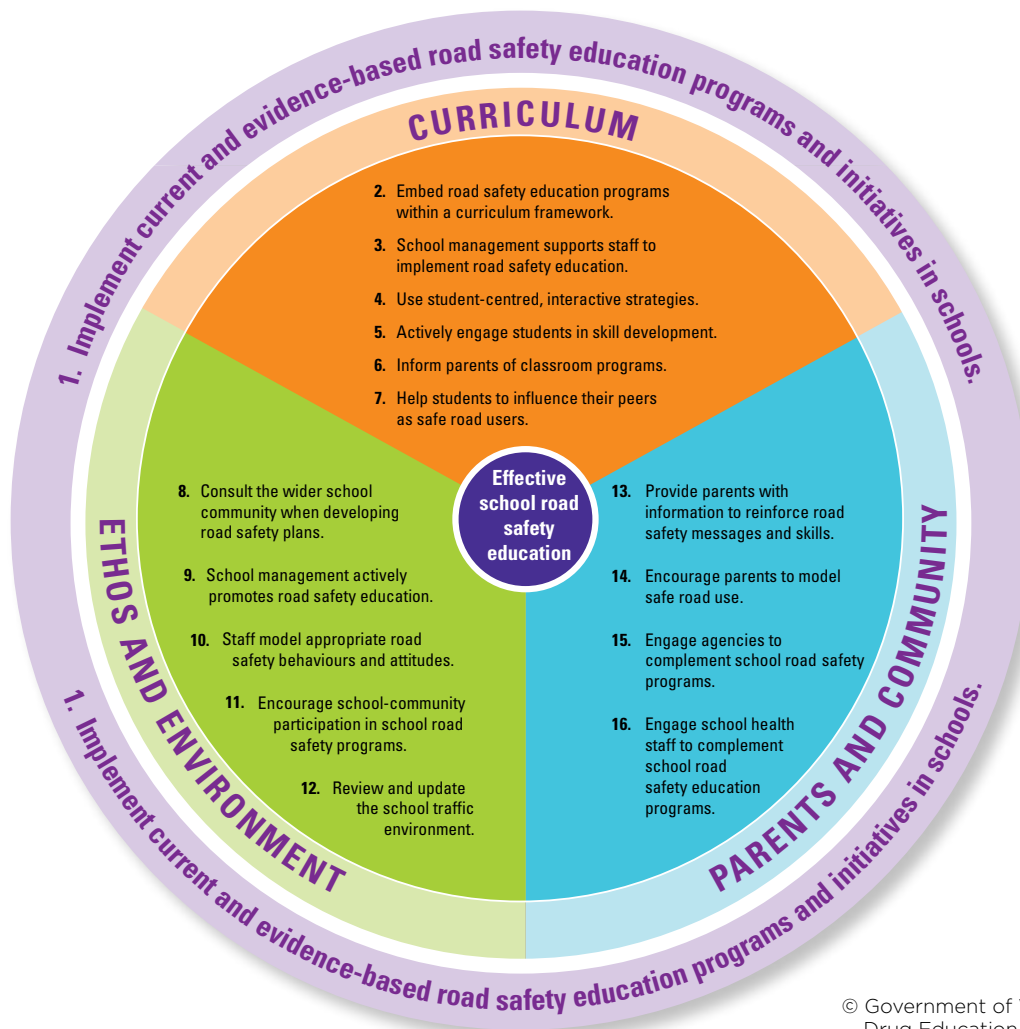
ETHOS AND ENVIRONMENT



CURRICULUM

**The most effective form of drug and road safety education is a comprehensive whole-school approach as this addresses the curriculum, the school community's ethos and environment, and relationships with parents and community.**

# SDERA's Effective School Education Models demonstrate how the Principles for School Drug and Road Safety Education fit within the three areas of the Health Promoting Schools Framework.



© Government of Western Australia, School Drug Education and Road Aware, 2010.

## About SDERA

For 20 years SDERA has been working with WA schools to help keep young people safer through best practice drug and road safety education.

To learn how you can align drug and road safety education at your school with best practice, contact SDERA on (08) 9402 6415 or email [sdera.co@education.wa.edu.au](mailto:sdera.co@education.wa.edu.au)

CELEBRATING

20 YEARS

SUPPORTING WA SCHOOLS

**SDERA**  
SCHOOL DRUG EDUCATION AND ROAD AWARE