

2017-2019

# DIRECTIONS

Western Australia's Road Safety Education Action Plan

**WARSEC**  
Western Australian Road Safety Education Committee

CONTRIBUTING TO THE WESTERN AUSTRALIAN  
TOWARDS ZERO ROAD SAFETY STRATEGY 2008-2020





## Directions

---

***Directions: Western Australia's Road Safety Education Action Plan 2017-2019*** has been produced by SDERA (School Drug Education and Road Aware) in consultation with the member agencies of WARSEC (Western Australian Road Safety Education Committee).

## Acknowledgements

WARSEC wishes to acknowledge the working party who guided the development of this Directions document on behalf of WARSEC and its member agencies.

## Working party

**Matt Martinovich** School Drug Education and Road Aware

**Wayne Houden** RAC

**Melissa McKenzie** Department of Transport

## Accessing the plan

Directions can be viewed online at [www.sdera.wa.edu.au](http://www.sdera.wa.edu.au) and WARSEC member agency websites.



## Contents

---

- 4** Safe road use and road safety education
- 6** Aim
- 7** Children, adolescents and road use
- 8** Road safety education needs to start from birth
- 10** The crucial role of education for parents and carers
- 11** Evidence-based practice
- 12** Road safety education priorities
- 14** Priority 1:  
Build a positive road safety culture in schools and early childhood services
- 22** Priority 2:  
Promote safe behaviours among young road users
- 26** Priority 3:  
Strengthen leadership and collaboration of road safety education in WA
- 29** Appendix 1: Principles for School Road Safety Education
- 31** Appendix 2: National Practices for Early Childhood Road Safety Education
- 31** References

# Safe road use and road safety education

## Safe road use

**Safe Road Use is one of the cornerstones of the Towards Zero strategy. The Safe Road Use enforcement and education initiative has the potential to save 2,200 people from being killed or seriously injured over the 12 year life of the strategy.**

Influencing the behaviour of road users is critical in saving lives and preventing injuries on our roads. We know road users do not always obey the road rules so *Towards Zero* has a strong focus on:

- Education for road users
- Enforcing the road rules
- Promoting the safe system approach.

A safe system approach to road safety education is about facilitating young road users to be mobile and safe. It is about school staff, parents and carers promoting safe interaction and safe behaviour within the road and transport system.

## Road safety education in Western Australia

**The delivery of road safety education in Western Australia is coordinated and supported by the Western Australian Road Safety Education Committee (WARSEC).**

WARSEC commenced in 2003 and is coordinated and chaired by School Drug Education and Road Aware. The membership agencies of the WARSEC are dedicated to the provision of road safety education for children and young people aged from birth to 18 years in Western Australia. WARSEC members are listed on the back cover.

This collaborative approach across government and non-government agencies is based on common goals to:

- Share knowledge, and develop evidence-based road safety education programs and education resources.
- Support the implementation of road safety education initiatives in school and community settings.
- Create the momentum for a road safety culture that helps to reduce the risk of serious injury or death from road trauma to children and adolescents.

Children and young people remain a key target group in the *Towards Zero* Road Safety Strategy 2008-2020 as they are frequent users of the road and transport system in our state, as pedestrians, cyclists, passengers, drivers, and increasingly as scooter and moped drivers.

Road safety education is in the Western Australian Curriculum. Schools should implement road safety through their Health Education programs and as a cross-curricula context.





**Fostering shared responsibility, building relationships, partnering with the community and ensuring best practice road safety education are also pivotal to the *Western Australian Road Safety Strategy Towards Zero 2008-2020*.**

**Educating children and young people to be responsible, compliant road users and to become advocates for this behaviour, is a critical part of an integrated safe system approach to road safety.**



# Aim

**Directions: Western Australia's Road Safety Education Action Plan July 2017 to June 2019 has been developed as part of an ongoing commitment to road safety education in WA.**

The aim of Directions is:

- To communicate the comprehensive road safety education programs and services targeting young road users aged from birth to 18 years and their parents/carers, that are provided across the state as a contribution to the *Towards Zero Road Safety Strategy 2008-2020*.
- To provide a clear overview of how each WARSEC member agency is contributing to road safety education
- To maximise efforts, reduce duplication, identify areas still to be addressed, and to work collaboratively.
- To provide road safety education that promotes a safe system approach and supports developmentally appropriate education that prepares young people to be compliant, alert and safer road and transport users.
- To raise the profile of evidence-based and effective road safety education.

This plan describes programs and services provided by WARSEC member agencies as well as other stakeholders, and aims to:

- Trigger discussion and engage other organisations working in areas aligned to road safety education, such as local councils, emergency services, health promotion and injury prevention organisations.
- Encourage these organisations to consider the benefits of integrating this document with their own business plans and priorities.

The actions and targets listed on pages 14 to 28 were current at the time of publication and are the responsibility of each agency. WARSEC will undertake a biennial review of this plan and report to the Road Safety Commission.

Ongoing behaviour change programs are identified as a strategy for Safe Road Use in the safe system matrix for Western Australia.

(MUARC, 2008)







## Children, adolescents and road use

---

**With increased exposure to traffic comes increased risk of injury and death. Road safety education focuses on minimising that risk at each stage of a child's interaction with the traffic system.**

The evidence suggests that risk minimisation is best achieved through regular and consistent education that takes the child's perspective into account. Whether it's teaching very young children to hold hands while crossing the road, primary school children the way to cycle and use buses safely, or by providing adolescents with pre-driver education, the focus of road safety education is on developing practical knowledge, risk awareness, skills, and behaviours and attitudes that can increase the safety of children and adolescents within the traffic environment.

*Towards Zero* has a strong focus on enforcing the road rules, educating road users and promoting a safe system.

**Every year in Western Australia about 35 children under the age of seven are killed or seriously injured in a vehicle. On average 16 per cent of these children are not correctly restrained.**

(Statistics from Main Roads IRIS, extracted September 2017, Road Safety Commission).

**Road safety education in schools should use approaches based on sound educational practice with an emphasis on problem-solving and practical skills training.**

(OECD, 2004)

# Road safety education needs to start from birth

**There are many factors including physical and cognitive development that influence and contribute to the safety of children and young people in the road and traffic environment. It is therefore essential that road safety education starts early and is an ongoing part of schooling.**

WARSEC aims to ensure that the road safety messages for these age groups are consistent and reinforced by the agencies listed in this plan.



## 0-4 years

A child up to 4 years of age is reliant on adults to make decisions that will keep them safe in the traffic environment, and requires constant supervision and correct role-modelling. They are at risk because they:

- Are small, making it difficult for drivers to see them, especially in driveways when reversing vehicles
- May be seated incorrectly, or not at all, in a child car restraint
- Do not understand the dangers associated with a traffic environment.



## 4-8 years

A child aged 4 to 8 years is beginning to understand why it is important to make safe decisions in traffic but still requires close supervision and role-modelling by adults. They are at risk because they are:

- Still developing peripheral vision and directional hearing
- Small in stature and not easily seen by drivers
- Unable to judge speed and distances of oncoming traffic
- Inclined to cross the road without taking time to check for traffic
- Impulsive, unpredictable and easily distracted.



## 8-12 years

A child aged 8 to 12 years understands that they need to make safe decisions in traffic but are still learning how to do this. They are also at risk because they are:

- Still developing peripheral vision and directional hearing
- Still unable to judge speed and distances of oncoming traffic
- Still easily distracted and inclined to cross the road without taking enough time to check for traffic
- Beginning to independently cycle, skate or scooter to school.





## 12-15 years

A young person aged 12 to 15 years is involved in independent travel and understands that the decisions they make can keep themselves and other road users safer in traffic. They are also at risk because they:

- Travel as passengers with young inexperienced drivers
- Are inclined to take risks and may be influenced by their peers to interact unsafely with traffic
- Cycle, skate or scooter more often and often choose not to wear a bicycle helmet
- Use public transport more frequently to get to school and other social occasions
- Can be distracted by mobile technology while walking or riding.



## 15-18 years

A young person aged 15 to 18 years is more involved in independent travel and may be considering becoming a learner driver or learner rider. They are also at risk because they:

- Are more likely to travel with a young inexperienced driver and in an overcrowded vehicle
- May be using alcohol and/or other drugs
- Underestimate the complex nature of driving and overestimate their ability to manage this
- May not be motivated to practise driving as much as possible while learning to drive
- May purchase a vehicle with a low safety rating
- Can be distracted by mobile technology while walking, riding or driving.

**Road safety education during early childhood and the school years plays an important role in laying the foundations for safe road use throughout life.**

WARSEC aims to ensure that the road safety messages for these age groups are consistent and reinforced by the agencies listed in this plan.

# The crucial role of education for parents and carers

**Road safety education and training is a lifelong learning process that neither begins nor ends in schools. All road users have a duty to keep children safe, and parents have a vital role to play through teaching and modelling correct road safety practices.**

Compelling evidence indicates that the most effective time to get involved in road safety education is early childhood, including the ante-natal period (Elliot, 2000).

It is therefore critical that parents of children aged from birth to four years understand that they are primarily responsible for what their children learn about road safety in this age group.

Elliot further acknowledges that parents are both direct and indirect educators. Indirectly children from a very

early age observe and imitate adult behaviours (both safe and unsafe). Parents and carers do play the role of major educator in the road and traffic system.

Road safety education programs in WA must aim to increase the awareness of parents and carers and their knowledge of the main road risk factors for children, and emphasise their responsibility as positive role models. Programs and resources should also provide information about the specific developmental milestones and strategies to keep children safe.

Parents and carers who provide guidance and support to children and young people, and who model safe road use behaviour and attitudes, make a significant contribution to the safety of children and young people in and around traffic.

For this reason, it is imperative that there is increased collaboration between home, school and the local community in supporting road safety education.

**Parents need to be involved more effectively in the delivery of road safety education both informally and formally. Parents must be informed in particular about the safety devices that can protect their children.**

(OECD, 2004)



# The crucial role of education for parents and carers





## Evidence-based practice

---

**The focus on evidence-based practice is at the heart of road safety education in Western Australia.**

Best practice road safety education can have a positive influence on the behaviour of children and young people in real traffic situations by increasing their understandings about:

- How to stay safe and behave safely in traffic.
- Their responsibilities as a road user.
- How their intentions to interact safely in traffic will improve safety and wellbeing.

A wide body of evidence now indicates that best practice road safety education provides the best opportunity for achieving a sustained improvement in behaviour change and a reduction in road trauma for this vulnerable road user group.

### Principles for School Road Safety Education

In 2009, after a comprehensive review and analysis of empirical, theoretical and practical evidence, the Child Health Promotion Research Centre (CHPRC) at Edith Cowan University in Western Australia defined 16 best practice principles in road safety education (refer to appendix 1).

These evidence-based Principles help to ensure the content and delivery methods of road safety education nationally are consistent with what is currently understood to be best practice for 4 to 18 year olds.

### National Practices for Early Childhood Road Safety Education

In 2012, early childhood education and road safety experts across Australia and New Zealand developed national practices for early childhood road safety, based on research conducted by CHPRC (refer appendix 2).

The practices guide early childhood educators and policy makers to develop, implement and evaluate evidence-based road safety programs that support children (birth to 4 years) and their families learning about road safety.

# Road Safety Education Priorities

---

**WARSEC has developed three priorities for the two-year strategy period, July 2017 to June 2019. These priorities have been identified to support the *Towards Zero Road Safety Strategy 2008-2020* and in particular the cornerstone of Safe Road Use, and are based on research and the experience and expertise of WARSEC member agencies.**

The priorities have been developed:

- From a State Government and Non Government Agency perspective and link to a range of policies and plans across Government.
- With a collaborative and linked approach to strengthen the effectiveness of road safety education and recognises opportunities for expansion beyond traditional approaches.
- To ensure road safety education in WA is targeted and that duplication of programs, resources and services is avoided.
- With a research perspective (World Health Organisation, 1986) that describes an approach where schools, community agencies and parents work in partnership to address relevant community to increase health outcomes.

The three priorities, the vision of each priority, and the policy and framework linkages across Government are shown in the following summary.





# ROAD SAFETY EDUCATION PRIORITIES



## Policy / Framework Linkages:

*Towards Zero Road Safety Strategy 2008-2020*

<p>National Quality Framework for Early Childhood Education and Care</p> <hr/> <p>National Road Safety Strategy 2011-2020</p> <hr/> <p>WA Curriculum P-10, Health and Physical Education Syllabus</p> <hr/> <p>Principles for School Road Safety Education</p> <hr/> <p>National Practices for Early Childhood Road Safety Education</p>	<p>Graduated Driver/ Rider Training and Licensing System WA</p> <hr/>	
--	---	--



# Priority 1

## Build a positive road safety culture in schools and early childhood services

---

**Creating a culture where road safety is a shared responsibility and an important community value of Western Australians and will contribute to the vision of the State's road safety strategy.**

Schools and early childhood services play a vital part in helping to develop safe road use behaviours in children and young people and in influencing the habits of parents and carers. However, they can be even more powerful in their role if they are part of a collaborative approach that includes school administration and centre management, local government, community agencies, and most importantly parents and carers.

This collaborative approach is critical to effective development of safe road use behaviours among children and young people. It ensures there is a range of services, programs and resources which are needed to promote the safety of children and adolescents.

Since the development of the Principles for School Road Safety Education in 2007 (refer to page 29), WARSEC has worked towards ensuring that road safety education resources reflect best practice, and targets the road safety issues that increase the risk for children and young people in the road and traffic

environment. In particular, children and young people are at their most vulnerable when they are using the road system as pedestrians, passengers, cyclists and novice drivers.

The development of National Practices for Early Childhood Road Safety Education (refer to page 31) will now guide WARSEC in actions related to early childhood services.

Resources for early childhood and primary and secondary schools aim to target key development points in road safety behaviour in children and young people. WARSEC is committed to developing quality road safety education resources (and reviewing and updating them when required) to support educators delivering road safety education to children from birth to 18 years, and their parents and carers.

Importantly, all the resources that have been developed form part of an integrated approach by WARSEC to ensure that early childhood services and schools not only have the resources, but also the skills and expertise to deliver the road safety content in line with evidence-based practice.

This plan will ensure that road safety education resources are developed to support educators delivering road safety programs for children.



## PRIORITY 1

To build a positive road safety culture in schools and early childhood services

### SUPPORT SCHOOLS AND EARLY CHILDHOOD SERVICES

AGENCY	ACTION	MEASURE
SDERA	Provide <i>Smart Steps</i> resources to school staff, early childhood educators and community health professionals.	50 resources distributed state-wide annually.
	Promote early childhood road safety messages to families and children at events, forums and workshops using the <i>Smart Steps</i> Izzy mascot.	20 Izzy appearances (metropolitan and regional) annually.
	Support and fund primary and secondary schools to implement a whole-school approach to road safety using the <i>Changing Health Acting Together</i> (CHAT) process.	100 schools implementing a whole-school approach to road safety education. 70 schools developed road safety guidelines.
Ngala, Meerlinga, Kidsafe, Playgroup WA, SDERA	Coordinate the development, training and delivery of <i>Smart Steps</i> road safety education in the early childhood sector.	4 service agreements. 11 SDERA Regional Consultants support regional delivery.
	Agencies deliver <i>Smart Steps</i> parent sessions based on service agreement with SDERA.	400 parents reached, annually.
Ngala	<i>Smart Steps</i> road safety messages included in Ngala Early Parenting Program.	800 presentations to a total of 6,000 participants annually.
	Parenting Connections WA (PCWA) provides networks of coordinated parenting services. PCWA sessions to be delivered in the Metro area, Midwest and Gascoyne regions.	4 sessions delivered annually.
Constable Care Child Safety Foundation SDERA WA Department of Education	Commence operation of the Constable Care Safety School experiential road safety learning centre with children participating in SDERA-linked activities.	Learning centre operational by Term 4 2017. At least 2,000 children attend.
Constable Care Child Safety Foundation	Deliver Constable Care road safety theatre-in-education programs for 3 to 8 year olds in early-learning, pre-primary and primary schools.	80 road safety performances annually. 6,000 children reached, annually.
Department of Health, Injury Prevention Unit Kidsafe WA	Manage a state-wide Child Safety Injury prevention health promotion program with the outcome that children experience less-avoidable injuries.	6 monthly bulletins and annual reports (prepared by Kidsafe WA for the Department of Health).

## PRIORITY 1

To build a positive road safety culture in schools and early childhood services

### SUPPORT SCHOOLS AND EARLY CHILDHOOD SERVICES

AGENCY	ACTION	MEASURE
Kidsafe WA	Conduct a Child Car Restraint (CCR) fitting, checking and education service for parents and carers across WA.	5,000 parents and carers engaged in a CCR service annually.
	Conduct Type I CCR Fitting Course.	35 people trained to become a registered Type I CCR Fitter annually.
	Provide CCR road safety education to the community.	500 parents/carers, professionals, and children informed about CCRs annually.
Public Transport Authority	Raise awareness of the <i>Right Track</i> educational resources in the at-risk education sector.	1,000 website and social media visits per month. 50 schools receiving resources, annually.
	Deliver <i>Right Track</i> rail safety presentations to schools and youth organisations, specifically targeting at-risk behaviour.	8,000 students attending a presentation annually.
	Promote <i>Get on Board</i> online resources through various platforms, state wide.	5,000 program flyers distributed to schools and agencies, annually. Information published 8 times per year.
	Deliver <i>Get on Board</i> program to targeted groups in metropolitan schools and communities.	5,000 students participating, annually.
Department of Transport Driver and Vehicle Services SDERA	Provide content to learner drivers via SDERA, schools and the <i>Keys for Life</i> program to reflect up-to-date licensing information.	12,000 Proof of Identity brochures provided annually. 12,000 <i>Drive Safe</i> books provided annually. Learner driver and licensing information on Transport website maintained quarterly.
	Deliver and promote licensing services to learner drivers, with specific benefits for <i>Keys for Life</i> students across WA.	8,000 <i>Keys for Life</i> Certificates presented and recognised during Learner's Permit applications.



## PRIORITY 1

To build a positive road safety culture in schools and early childhood services

### SUPPORT SCHOOLS AND EARLY CHILDHOOD SERVICES

AGENCY	ACTION	MEASURE
WA Council of State School Organisations (WACSSO)	Disseminate WACSSO's <i>Guidelines for addressing traffic control issues around schools</i> to P&C Associations.	Guidelines document published annually in WACSSO Affiliate Guide and featured on WACSSO website.
Prevent Alcohol and Risk Related Trauma in Youth (PARTY) program, Royal Perth Hospital, WA Department of Health	Provide PARTY program excursions and incursions for secondary students.	40 programs conducted, annually.
PARTY program, Royal Perth Hospital, WA Department of Health	Conduct a needs analysis and monitor feedback about attitudes, trends and behaviours from students who participate in PARTY program, to ensure program relevance, improvement and currency.	Feedback reviewed and incorporated annually. 90% of participating students providing feedback annually.
RAC	Provide road safety lessons and activities to primary school students as part of the RAC Little Legends Club.	5,000 students participate annually.
Your Move Department of Transport	Engage primary and secondary schools to become <i>Your Move</i> members.	25 active ' <i>Your Move</i> member' schools, annually. 250 <i>Your Move</i> School activity 'Story reports' received from <i>Your Move</i> schools.
	Support <i>Your Move</i> schools in cultural change to normalise students walking, riding and taking public transport to and from school.	10% annual average increase in active travel (walking, cycling and public transport) among <i>Your Move</i> schools.
WA Police	Promote, support and enforce safer road use behaviour and adherence to the Road Traffic Act and regulations across WA.	Legislation and regulations maintained on WA Police website, annually.

## PRIORITY 1

To build a positive road safety culture in schools and early childhood services

### PROFESSIONAL DEVELOPMENT

AGENCY	ACTION	MEASURE
SDERA Ngala, Meerlinga, Kidsafe, Playgroup WA	Conduct <i>Smart Steps</i> workshops for early childhood educators across WA.	10 <i>Smart Steps</i> workshops conducted annually.
SDERA	Conduct <i>Safer Kids</i> professional learning workshops for primary school staff across WA.	10 workshops conducted annually. 200 teachers attending workshops annually.
	Conduct <i>Keys for Life</i> professional learning workshops for secondary school staff across WA.	35 workshops conducted annually, 450 teachers attending workshops annually.
	Conduct <i>Keys4Life</i> Online professional learning for regional and metropolitan based non-school sites and agencies	3 workshops conducted annually. 25 agency staff attending workshops annually.
Injury Matters	Provide professional development forums and online information resource (Knowledge Hub) which includes road safety component.	1 Injury Prevention forum held each year. Knowledge Hub 100 hits per month.
Public Transport Authority	Provide one-hour inductions to teachers delivering the <i>Right Track</i> education program.	All schools delivering <i>Right Track</i> received induction.
WALGA RoadWise	Deliver accredited Type 1 Child Car Restraint Fitter courses in metropolitan and regional areas.	11 courses delivered, of which at least 6 are in regional areas.
	Provide ongoing support and information to the network of Type 1 Child Car Restraint Fitters.	120 Type 1 Child Car Restraint Fitters registered to deliver services throughout WA annually.



## PRIORITY 1

To build a positive road safety culture in schools and early childhood services

### UPDATE RESOURCES TO REFLECT CURRENT RESEARCH & DEVELOPMENTS

AGENCY	ACTION	MEASURE
Public Transport Authority	Review content and lessons on the <i>Get on Board</i> website for relevancy and to align with current curriculum.	Annual review.
	Review and update <i>Right Track</i> resources as required.	All participating teachers complete an evaluation annually.
	Update content on <i>Right Track</i> website.	Annual review.

## PRIORITY 1

To build a positive road safety culture in schools and early childhood services

### DEVELOP BEST PRACTICE RESOURCES

AGENCY	ACTION	MEASURE
Constable Care Child Safety Foundation SDERA WA Education Department	Develop a resource for the Constable Care Traffic Safety experiential learning centre by working with SDERA to include <i>Smart Steps</i> and <i>Challenges and Choices</i> material.	New resource completed and available for download by October 2017.
Paraplegic Benefit Fund	Deliver 20 PBF road safety presentations using a presenters' personal story to deliver clear road safety outcomes in line with the Western Australian Curriculum.	20 metropolitan presentations to students of years 7, 8 and 9.
WALGA RoadWise	Distribute the resource <i>Guidelines for Road Safety Around Schools</i> to Local Governments and schools.	20 guidelines distributed annually.

## PRIORITY 1

To build a positive road safety culture in schools and early childhood services

### PROMOTE A POSITIVE ROAD SAFETY CULTURE

AGENCY	ACTION	MEASURE
SDERA	Distribute SDERA News to all schools.	Quarterly distribution.
	Engage 20 new schools in CHAT.	20 CHAT schools annually.
	Provide road safety information and resources on SDERA website for educators, parents and students.	1,000 site views annually.
	Attend and present at local/state/national road safety conferences/workshops.	2 events annually.
	Submit nominations for relevant education/safety/injury prevention awards.	1 nomination annually.
SDERA Ngala, Meerilinga, Kidsafe WA, Playgroup WA	Provide road safety information about modelling and teaching road safety to parents of young children.	35,000 parents annually.
Ngala	Design of website, Facebook pages and social media for parents – includes link to SDERA website.	One post each page, per quarter.
	Ngala newsletter.	Produced quarterly 3,000 to 4,000 openings each quarter.
Public Transport Authority	Contribute <i>Right Track</i> safety messages for Community Safety Month, National Youth Week, NAIDOC Week and Rail Safety Week.	2 events annually 200 event participants reached in total.
	Deliver tailored <i>Right Track</i> and <i>Get on Board</i> programs at safety events such as Community Safety Month and Kidsafe WA <i>Safety in Schools</i> Program.	2 events annually.
	Distribute TransEd e-newsletter to the education sector.	2 articles included annually.
	Produce a digital assets kit for use in schools communication platforms promoting safe behaviour around the public transport network.	Distribute metro-wide 2018.
Kidsafe WA	Implement state wide <i>Safety in Schools</i> program including child-friendly injury prevention school presentations.	10 presentations conducted annually.
Injury Matters	Conduct Injury Matters safety and injury prevention awards.	Bi-Annual award ceremony.
	Promote community engagement and advocacy for road safety through representation on network committees.	Coordinate Know Injury Regional Network Group. Member of: Local Government.



## PRIORITY 1

To build a positive road safety culture in schools and early childhood services

### PROMOTE A POSITIVE ROAD SAFETY CULTURE

AGENCY	ACTION	MEASURE
Road Safety Commission	Provide current road safety information, statistics and research on the Road Safety Commission website.	Weekly monitor of website road crash statistics.
	External user surveys conducted to ensure Road Safety Commission website is fulfilling expectations and delivering targeted satisfaction levels.	Surveys conducted annually.
	Deliver priority state wide road safety campaigns about restraints, distraction and fatigue, cyclists and motorcyclists, safer vehicles, drink driving and speeding.	7 campaigns conducted annually.
Parents and Friends Federation of WA (PFFWA) WA Council of State School Organisations (WACSSO)	Provide parents and parent groups with road safety messages to help them build a positive road safety culture at their school.	Parent comments and understanding is recorded, annually.

## Priority 2

### Promote safe behaviours among young road users

---

**Motor vehicle crashes are the leading cause of death of young people in Australia and throughout much of the developed world.**

Road safety education plays an important role in promoting safer driving and riding practices to learners prior to young people entering the licensing system.

The student-centred actions in this plan target increased awareness of

road safety issues and the fostering of positive attitudes, with speed, fatigue, alcohol and seatbelts key topics, as well as the privilege and responsibilities of owning and driving a vehicle. Particular attention is also paid to risk-taking and peer relations including the development of empowerment and decision-making strategies to make sensible decisions by weighing up the choices, whether as a driver, rider, passenger or pedestrian.





## PRIORITY 2

To promote safe behaviours among young road users

### STUDENT-CENTRED ACTIONS

AGENCY	ACTION	MEASURE
SDERA	Support all secondary schools in WA to implement the 10-lesson <i>Keys for Life Pre-driver Education</i> program.	50% of all secondary schools (government and non-government) implement this program annually. 11,000 students participate annually.
	Support community based agencies and non-school sites using <i>Keys4Life Online</i> to young adults not in school settings.	15 agencies deliver <i>Keys4Life Online</i> annually. 100 young people educated through <i>Keys4Life Online</i> annually.
	Support schools to deliver either one of the <i>Keys for Life</i> endorsed programs for students to gain 'achievement' on their Statement of Results from SCSA.	30% of <i>Keys for Life</i> schools enrol their students in the endorsed program annually.
	Develop <i>Keys for Life</i> learning materials for Indigenous school aged novice drivers in metropolitan, regional and remote areas.	Final draft developed, published and uploaded to SDERA website by March 2017.
	Develop <i>Keys for Life</i> learning materials for CALD school aged novice drivers.	Developed, published and uploaded to SDERA website by February 2018.
	Implement <i>Change Makers</i> youth road safety campaign for Wheatbelt region.	Conduct 3 youth road safety forums.
SDERA RAC	Support schools to host the <i>Keys for Life Parent / Student Workshop</i> .	40 workshops conducted by RAC annually. 10 workshops conducted by SDERA annually. 1,500 parents attend <i>Keys for Life Parent Workshop</i> annually.

## PRIORITY 2

To promote safe behaviours among young road users

### STUDENT-CENTRED ACTIONS

AGENCY	ACTION	MEASURE
WALGA RoadWise	Coordinate the Type 1 Child Car Restraint Fitting Service across the state (i.e. courses and phone service).	3,000 Child Car Restraints inspected or installed. 450 parents or carers provided with information via phone service.
RAC RPH, WA Police, St John Ambulance, Department of Fire and Emergency Services, Paraplegic Benefit Fund, Constable Care Theatrical Response Group, Injury Matters	Conduct RAC bstreetsmart for Year 10 to 12 students.	6,000 Year 10 to 12 students attend annually.
RAC	Provide road safety lessons and activities to secondary school students as part of RAC Road Ready.	15,000 students participate annually.
Public Transport Authority	Deliver the <i>Right Track</i> education program targeting high risk young people at Banksia Hill Juvenile Detention Centre.	6 programs annually.
	Deliver <i>Right Track</i> rail safety presentations to schools and youth organisations, targeting at-risk behaviour.	8,000 students attending annually.
	Deliver <i>Get on Board</i> program to targeted groups in metropolitan schools and communities.	5,000 young people reached annually.
	Distribute DVD for use in schools and youth organisations promoting safe behaviour around the public transport network.	30 schools reached annually.



<b>PRIORITY 2</b> To promote safe behaviours among young road users		
STUDENT-CENTRED ACTIONS		
AGENCY	ACTION	MEASURE
Paraplegic Benefit Fund	Deliver the Paraplegic Benefit Fund road prevention presentations to students in Years 10 -12 in metropolitan schools. Deliver a road safety intervention based around personal stories at Country Week 2018.	Deliver 80 metropolitan secondary school PBF presentations annually. Deliver road safety events at Country Week events in 2018.
PARTY program, Royal Perth Hospital, WA Health Department	Deliver PARTY program for Aboriginal young people.	50 + participants annually.
	Deliver PARTY program in the Perth metropolitan area.	1,000+ participants annually at RPH. New metro pilot site commencing late 2017 at Midland (to include Wheatbelt schools).
	Deliver PARTY program in regional areas.	3 regional centres. 550+ participants annually.

<b>PRIORITY 2</b> To promote safe behaviours among young road users		
SUPPORT ACTIONS		
AGENCY	ACTION	MEASURE
Constable Care Child Safety Foundation RAC	Provide actors for the RAC bstreetsmart crash recreation event for Year 10 to 12 students and evaluate their performance.	Actors perform in each RAC bstreetsmart event.
SDERA	Reward achievement in road safety education with schools implementing a whole-school approach to road safety using SDERA's Changing Health Acting Together (CHAT).	1 Award Ceremony September 2017.
RAC	Support 17-21 year olds with <i>free2go</i> road side assistance.	<i>Free2go</i> offered annually.
	Support 12 – 21 year olds with road safety related content on the RAC <i>Road Ready</i> website.	RAC <i>Road Ready</i> website updated annually.
Parents and Friends Federation of WA (PFF WA)	Provide families with information about road safe behaviours to facilitate these behaviours being reinforced and modelled at home.	Road safety information included in agency publications 4 times annually.

## Priority 3

### Strengthen leadership and collaboration of road safety education in WA

**The WA Road Safety Education Committee is a cross-agency, collaborative group focused on achieving best practice in road safety education for children and young people in Western Australia, that aims to:**

- Emplify collaboration between agencies with both an interest in, and influence over, the delivery of effective road safety education throughout Western Australia.
- Guide schools and early childhood services in their road safety initiatives to ensure these contribute to *Towards Zero* and the *National Road Safety Strategy 2011-2020*.

- Ensure all actions in this plan reflect the *Principles for School Road Safety Education* (SDERA 2009) and the *National Practices for Early Childhood Road Safety Education* (RSERGA, 2012).

Commitment to these principles and practices, and provision of evidence-based programs and evaluation of road safety education resources will strengthen the committee's leadership and co-ordination role over the next two years.





### PRIORITY 3

Strengthen leadership and collaboration of road safety education in WA

#### COMMUNICATE AND PROMOTE ROAD SAFETY EDUCATION KNOWLEDGE

AGENCY	ACTION	MEASURE
SDERA	Provide briefings to the Road Safety Commission, Department of Education senior executive and the media for meetings, parliamentary questions and Ministerials.	All briefings provided.
	Provide WARSEC members with Australian and New Zealand road safety updates.	Information shared biannually.
	Road safety education resources and information included on SDERA website.	Information monitored annually.
Department of Health, Injury Prevention Unit	Disseminate policy document <i>'Injury Prevention in Western Australia: A Review of Statewide Activity for Select Injury Areas'</i> .	150 copies disseminated to government and non-government stakeholders in WA. Policy document included on WA Department of Health and Injury Matters websites.
RAC	Road safety information on RAC website, RAC Little Legends Club website and RAC Road Ready website.	Information updated annually.
Public Transport Authority	Disseminate road safety information through the <i>Get on Board</i> website and <i>Right Track</i> online media channels.	Information included on request.
WA Council of State School Organisations (WACSSO)	Disseminate road safety information including SDERA's <i>Smart Steps</i> and <i>Keys for Life</i> programs to parents and carers.	Information published biannually.
	Include information from WARSEC agencies in WACSSO eNews (fortnightly electronic newsletter circulated to parents and the wider public school community).	Information included quarterly.
	Include an article from a WARSEC agency in P&C Voice magazine.	1 article published annually.
	Promote WARSEC agency programs, resources and services at annual WACSSO Conference Weekend.	Material from 2 WARSEC agencies included with conference promotional products each year.

### PRIORITY 3

Strengthen leadership and collaboration of road safety education in WA

#### PROVIDE LEADERSHIP IN ROAD SAFETY EDUCATION

AGENCY	ACTION	MEASURE
SDERA	Provide secretariat and leadership roles for the conduct and operation of the WA Road Safety Education Committee (WARSEC).	Chair quarterly meetings. Collate and distribute agency quarterly updates. Distribute minutes each quarter. Maintain membership database. 1 presentation session organised annually.
	Coordinate the Educators Workshop at the Australasian Road Safety Conference.	1 Educators Workshop.
SDERA RAC WALGA RoadWise	Contribute to the roles and operation of the Road Safety Education Reference Group Australasia (RSEGA)	

# Principles for School Road Safety Education

---

The 16 Principles are based on research conducted by the Child Health Promotion Research Centre, Edith Cowan University.

The Principles describe best practice in school road safety education for young people aged 4 to 18 years.

## 1. Overarching Principle

### Principle 1.1

**Implement evidence-based road safety education programs and initiatives in schools and include local research and current legislation where available.**

## 2. Policy and Practice

### Principle 2.1

**Consult the wider school community when developing road safety guidelines and policies and then disseminate this information to families and monitor implementation.**

### Principle 2.2

**School management actively promotes road safety education by supporting staff to plan and implement road safety education within the curriculum and other school programs and initiatives.**

### Principle 2.3

**School management actively encourages staff to model appropriate road safety behaviour and attitudes consistent with the school's road safety guidelines.**

### Principle 2.4

**Encourage and promote school-community participation in school road safety programs.**

## 3. Curriculum

### Principle 3.1

**Embed road safety programs within a curriculum framework thereby providing timely, developmentally appropriate and ongoing road safety education for all year levels.**

### Principle 3.2

**School management supports teachers to effectively implement road safety education by ensuring access to available resources and professional learning opportunities.**

### Principle 3.3

**Use student-centred, interactive strategies to develop students' utility knowledge, skills, attitudes, motivation and behaviours regarding road safety.**



**Principle 3.4**

**Actively engage students in developing skills that focus on identifying and responding safely to risk situations.**

**Principle 3.5**

**Provide information to parents/carers that will encourage them to reinforce and practise road safety skills developed in the classroom, in the real road environment.**

**Principle 3.6**

**Encourage students to support and influence their peers positively as a way of improving road safety behaviour.**

**4. School-Home-Community Links****Principle 4.1**

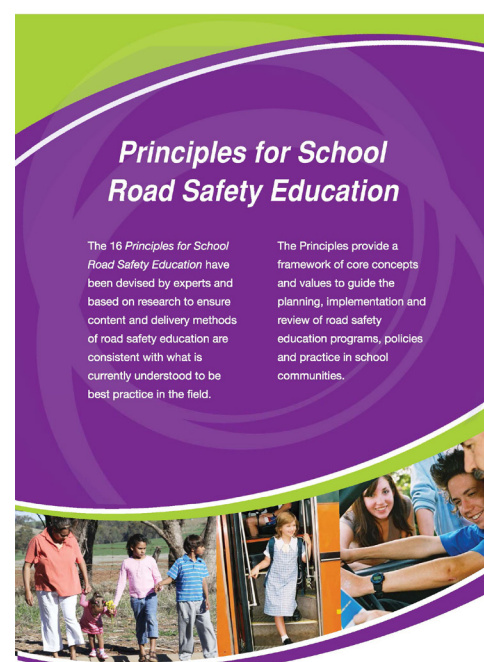
**Provide parents and carers with information that will assist them to reinforce appropriate road safety messages and skills (including school guidelines and policies) at home.**

**Principle 4.2**

**Provide parents and carers with practical, opportunistic and planned, on-road training for and modelling of appropriate behaviours to their children.**

**Principle 4.3**

**Establish and maintain links and involve community agencies and local government in the delivery of road safety messages that complement and support existing school road safety programs.**

**5. Physical Environment****Principle 5.1**

**Review and update where necessary, in partnership with external authorities, the school road environment to encourage and support parents and carers to practise safer road safety skills.**

**6. School Health Services****Principle 6.1**

**Engage, train and resource school health service staff to complement and support road safety education, programs and other initiatives in schools.**

# National Practices for Early Childhood Road Safety Education

**The National Practices for Early Childhood Road Safety Education have been developed by early childhood education and road safety experts across Australia and New Zealand. The eight national practices are based on research and are aligned with the Early Years Learning Framework (COAG 2009).**

The national practices will guide early childhood educators and policy makers to develop, implement and evaluate evidence-based road safety programs that support children's and families learning about road safety.

## Holistic approaches

Recognise that children's learning is integrated and interconnected when making curriculum decisions about road safety education.

## Responsiveness to children

Deliver road safety education which is responsive to individual children and extends children's strengths, knowledge and interests.

## Learning through play

Through play-based learning seek opportunities to address road safety in a way that expands children's thinking and encourages problem solving.

## Intentional teaching

Engage in intentional teaching which extends and expands children's learning about road safety.

## References

Organisation for Economic Co-operation and Development (2004). **Keeping Children Safe in Traffic**: Paris.

Elliott, B. (2000). **Review of Good Practice: Children and Road Safety Education** (Western Australian Department of Transport and Office of Road Safety).

Government of Western Australia, School Drug Education and Road Aware, Perth (2009). **Getting it Together: A Whole-School Approach to Road Safety Education**.

## Learning environments

Provide opportunities in the learning environment, including the local community, for safe and meaningful interaction with children, parents and carers about road safety.

## Cultural competence

Implement road safety education that is culturally relevant for the diversity of children, their families and the community.

## Continuity of learning and transitions

Use the opportunity of transitions, in active partnership with children, families and the local community, for road safety education.

## Assessment for learning

Together with children and families, reflect on each child's learning and application of road safety to plan for future learning.

Monash University Accident Research Centre (2008). **Development of a New Road Safety Strategy for Western Australia, 2008-2020**.

Cross, D., Hall, M., & Bell, S. (2007). **The Walk With Your Kids Project Summary Sheet**. Perth, Western Australia: Edith Cowan University, Child Health Promotion Research Centre.

**Main Roads WA Integrated Road Information System (IRIS)**, extracted September 2017, prepared by the Road Safety Commission.

## DIRECTIONS

### Western Australia's Road Safety Education Action Plan for 2017-2019

Published October 2017



[constablecare.org.au](http://constablecare.org.au)



[headwest.asn.au](http://headwest.asn.au)



[injurymatters.org.au](http://injurymatters.org.au)



[kidsafe.com.au](http://kidsafe.com.au)



[rph.wa.gov.au](http://rph.wa.gov.au)



[rsc.wa.gov.au](http://rsc.wa.gov.au)



Easing the impact

[pbf.asn.au](http://pbf.asn.au)



[pff.wa.edu.au](http://pff.wa.edu.au)



Department of Transport

[transport.wa.gov.au](http://transport.wa.gov.au)



[yourmove.org.au](http://yourmove.org.au)



[pta.wa.gov.au](http://pta.wa.gov.au)



For the better

[rac.com.au](http://rac.com.au)



Road Trauma Support WA

[rtswa.org.au](http://rtswa.org.au)



RoadWise



WALGA

RoadWise is funded by the State Government and supported by Local Governments.  
[www.roadwise.asn.au](http://www.roadwise.asn.au)



EDUCATING FOR SMARTER CHOICES

[sdera.wa.edu.au](http://sdera.wa.edu.au)



[wacssso.wa.edu.au](http://wacssso.wa.edu.au)



[police.wa.gov.au](http://police.wa.gov.au)