

## MODULE 3 ROAD SAFETY QUIZ - KEYS4LIFE ONLINE

### Question 1

What should you do when approaching a railway crossing?

- Speed up to clear the crossing quickly
- Slow down and be prepared to stop if required
- Sound your horn

### Question 2

Does a police officer directing traffic over-rule traffic signs and traffic lights?

- No
- Yes, if it is daylight
- Yes

### Question 3

When approaching traffic lights, what does a red light with a green arrow (as shown in the diagram) mean?

- You may proceed in the direction of the arrow
- Stop, until all lights show green
- Proceed in any direction



### Question 4

In which order should the vehicles process?



- Vehicle X, then Y, then Z
- Vehicle Z, then Y, then X
- Vehicle X, then Z, then Y

### Question 5

Do you need to indicate if you are turning from a one-way street into another one-way street?

- Yes
- Yes, only if there is a vehicle behind you
- No

**Question 6**

At a railway crossing, are you allowed to cross if the train has passed, but the lights are still flashing?

- Yes
- No
- Yes, unless the crossing has boom gates

**Question 7**

If you are travelling in a lane that has a left-turn arrow marked on the road, can you drive straight ahead?

- Yes, if no other traffic is approaching
- Yes
- No

**Question 8**

How do even small amounts of alcohol affect your driving?

- By thinking you are driving better than you are
- By helping your driving ability
- By helping your judgement of speed

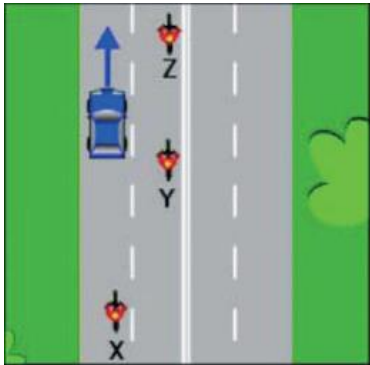
**Question 9**

Which of the following statements is correct?

- It is always safe to travel at the speed limit
- Your travelling speed should be as close to the speed limit as possible
- Travelling at the speed limit is sometimes too fast for the conditions

**Question 10**

Is a vehicle allowed to cross over the double unbroken white line? (as shown in the diagram)



- Yes, if the driver wishes to overtake the other vehicle
- No
- Yes, if the driver wants to make a right hand turn or a 'U turn' and it is legal to do so

**Question 11**

What is the maximum speed learner drivers (L plates) are allowed to drive?

- 110km/h
- 90 km/h
- 100km/h

**Question 12**

Do you need to indicate to overtake a vehicle on an unmarked two-way road?

- Yes, only if there is a vehicle behind you
- No
- Yes

**Question 13**

What is the legal blood alcohol concentration (BAC) for novice drivers?

- 0.00%
- 0.02%
- 0.05%

**Question 14**

How long must you indicate before you turn left or right?

- At least 70 metres before the turn
- Long enough to give sufficient warning to other road users before you turn
- At least 10 metres before the turn

**Question 15**

When approaching traffic lights, what does a green light with a red arrow mean?

- You may go in any direction other than that indicated by the arrow
- You may turn in the direction of the arrow, if it is safe to do so
- Stop, the lights are not working properly

**Question 16**

What is the correct proceed when changing lanes?

- Check your blind spot using the external mirrors, indicate and give way to traffic in the other lane
- Touch your brake pedal to warn any drivers behind you, indicate and give way to traffic in the other lane
- Check your mirrors, look over your shoulder to check your blind spot, indicate to change lanes with a sufficient distance to warn other drivers of your intention, and give way to traffic in the other lane

**Question 17**

Which motorcycle is in the car driver's blind spot?

- Motorcycle Y
- Motorcycle Z
- Motorcycle X

**Question 18**

When approaching traffic lights what does a green light with a green arrow (as shown in the diagram) mean?

- You may turn right only
- You may turn right or drive straight ahead
- You may drive straight ahead only

**Question 19**

For how long must you indicate before you overtake a vehicle?

- Long enough to give other road users sufficient warning of your intention
- At least 10 metres
- At least 100 metres

## Question 20

Which of the following is greater?

- Your braking distance
- Your stopping distance
- Your reaction distance

### ANSWERS

1. Slow down and be prepared to stop if required
2. Yes
3. You may proceed in the direction of the arrow
4. Vehicle Z, then Y, then X
5. Yes
6. No
7. No
8. By thinking you are driving better than you are
9. Travelling at the speed limit is sometimes too fast for the conditions
10. Yes, if the driver wants to make a right hand turn or a 'U turn' and it is legal to do so
11. 100km/h
12. Yes
13. 0.00%
14. Long enough to give sufficient warning to other road users before you turn
15. You may go in any direction other than that indicated by the arrow
16. Check your mirrors, look over your shoulder to check your blind spot, indicate to change lanes with a sufficient distance to warn other drivers of your intention, and give way to traffic in the other lane
17. Motorcycle Y
18. You may turn right or drive straight ahead
19. Long enough to give other road users sufficient warning of your intention
20. Your stopping distance

21.