

IZZY

on HOLIDAY



By Ken Spillman
Illustrated by Chris Nixon

Izzy In the City

First published by School Drug Education and Road Aware in 2012

**Ideation, project management, design and layout by
Red Meets Blue Design www.redmeetsblue.com.au**

**Written by Ken Spillman
Illustrations by Chris Nixon**

**Copyright Government of Western Australia,
School Drug Education and Road Aware, 2012**

**All rights reserved. No part of this publication may be reproduced,
stored in a retrieval system or transmitted
without prior permission from the copyright owner.**

**For more information on Izzy and road safety,
please visit www.sdera.wa.edu.au**

IZZY

on HOLIDAY



Izzy

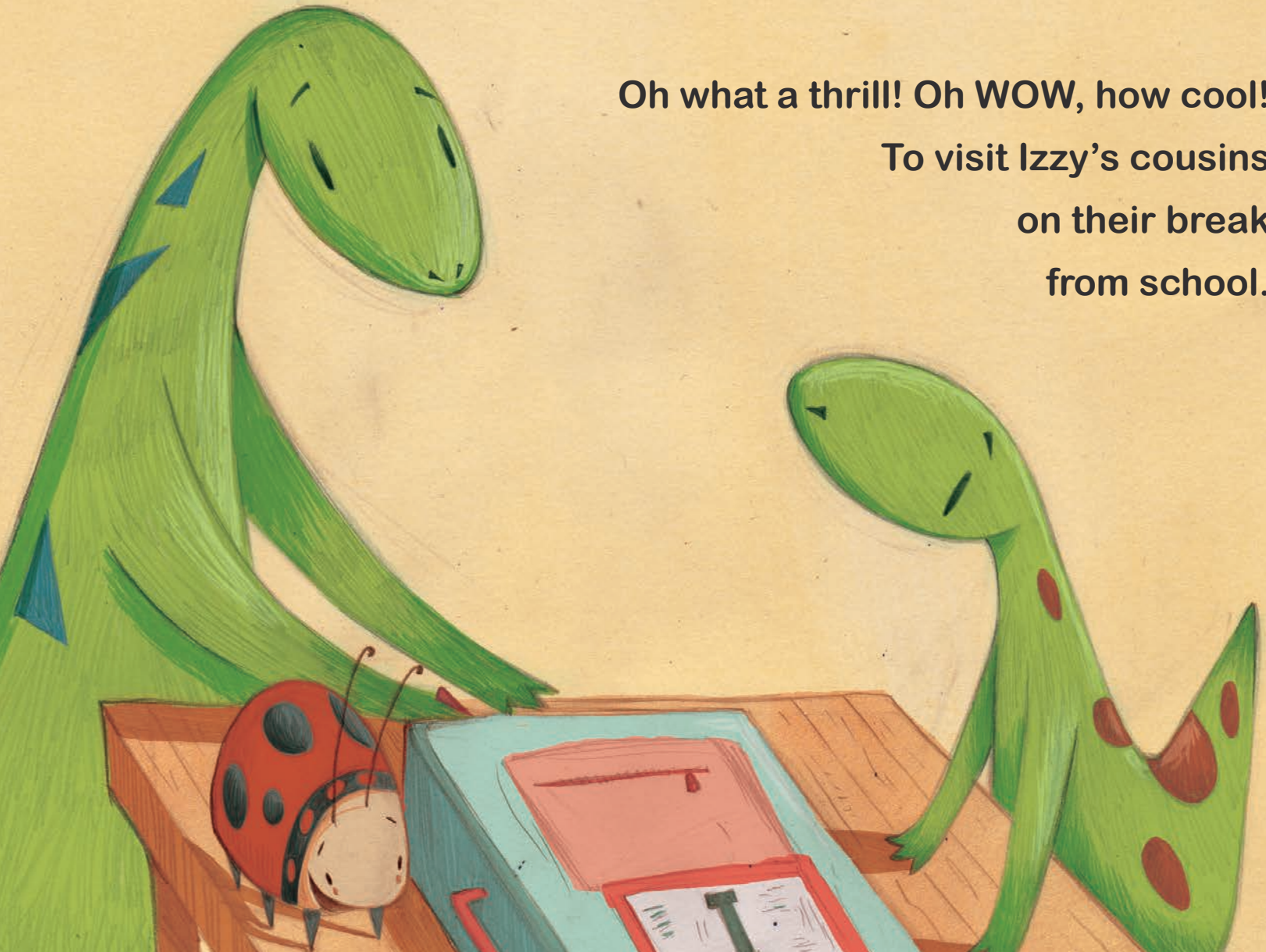
Nana Sue

Basil
Izzy's best friend

By Ken Spillman
Illustrated by Chris Nixon

Izzy's bag is packed. Nana Sue goes zip!
Soon they'll be ready
to leave on their trip.

Oh what a thrill! Oh WOW, how cool!
To visit Izzy's cousins
on their break
from school.



Basil the beetle
wants a holiday too.
He has six little bags,
one for each shoe.



Basil doesn't like his travelling crate.
Izzy hops in front, what a mistake!
Nana Sue points back at the booster seat.
"You know that's for you.
In there, my sweet."



Izzy doesn't grumble and gets back out.

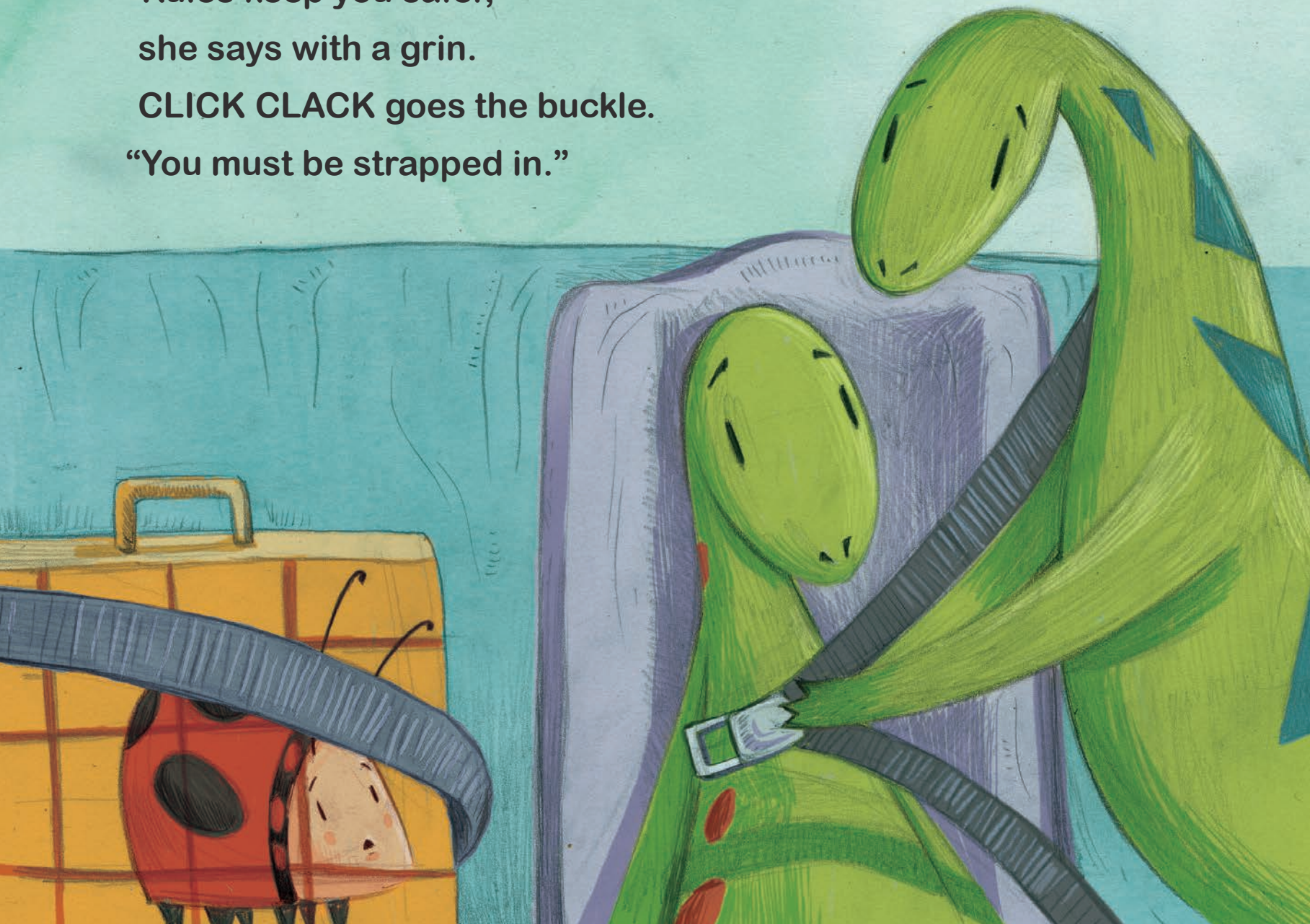
Nana Sue is right, without any doubt.

"Rules keep you safer,"

she says with a grin.

CLICK CLACK goes the buckle.

"You must be strapped in."



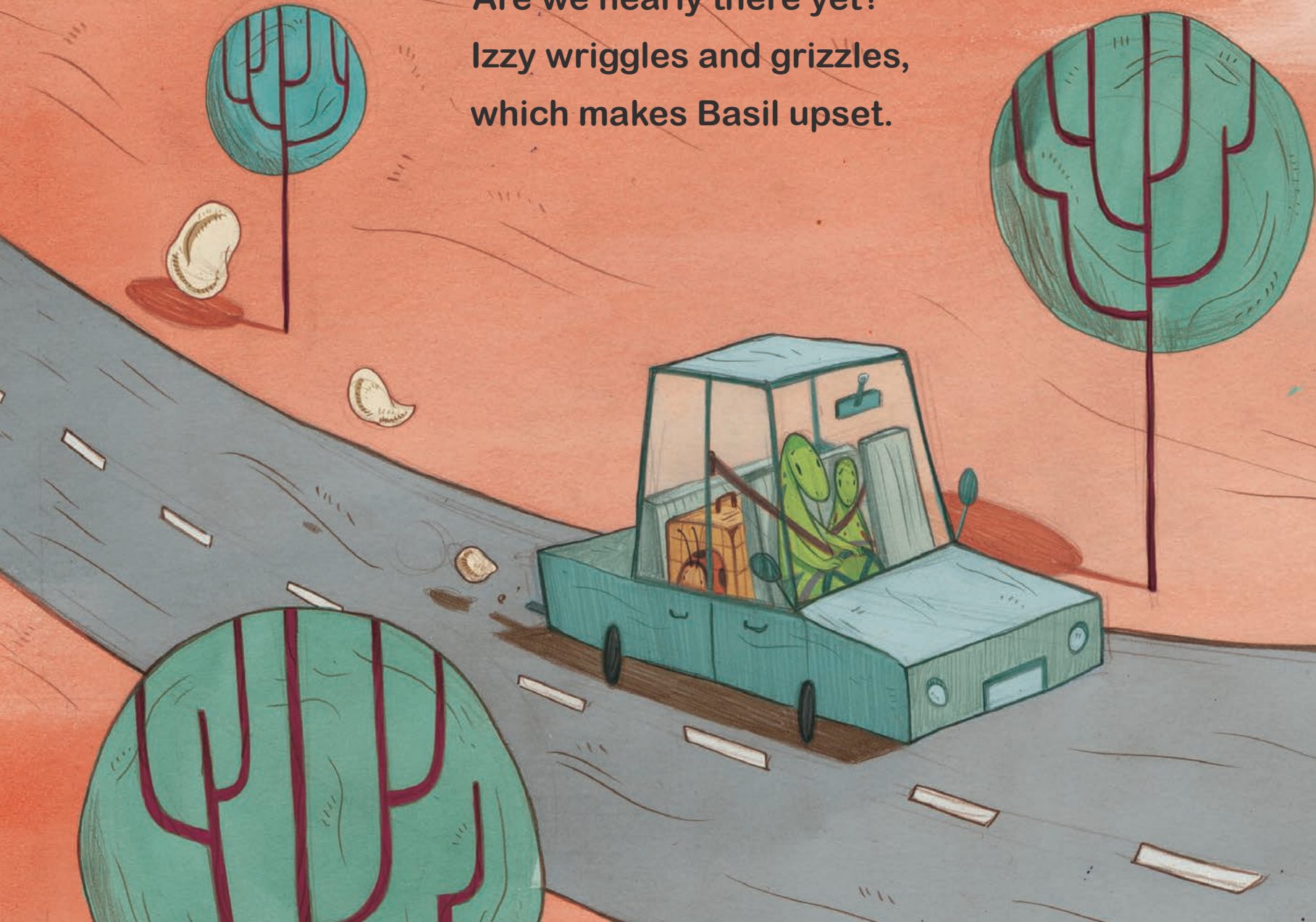



Now off they go,
singing a song.
They're going to the country,
so the journey is long.

Soon Izzy is restless.

“Are we nearly there yet?”

Izzy wriggles and grizzles,
which makes Basil upset.



A green snake is driving a car. The snake's head is in the driver's seat, and its body is visible behind the steering wheel. The car's interior, including the dashboard and steering wheel, is visible. The car is on a road with dashed white lines. In the background, there are stylized trees with green foliage and red trunks. A rearview mirror is visible on the windshield, showing the snake's head. The text is centered on the page.

“You mustn’t distract me,”
Nana Sue tells Izzy.
“You have games and colouring
to keep you busy.”

Izzy takes out paper
and a tray to lean on.



Izzy draws a
great picture
in purple crayon.



Nana Sue's very pleased and she tells Izzy so,
"But there was really no need for that fuss a while ago."



They stop halfway. "Time for some food."
Izzy needs the toilet. Basil's in a bad mood.

After their lunch, they return to the car.

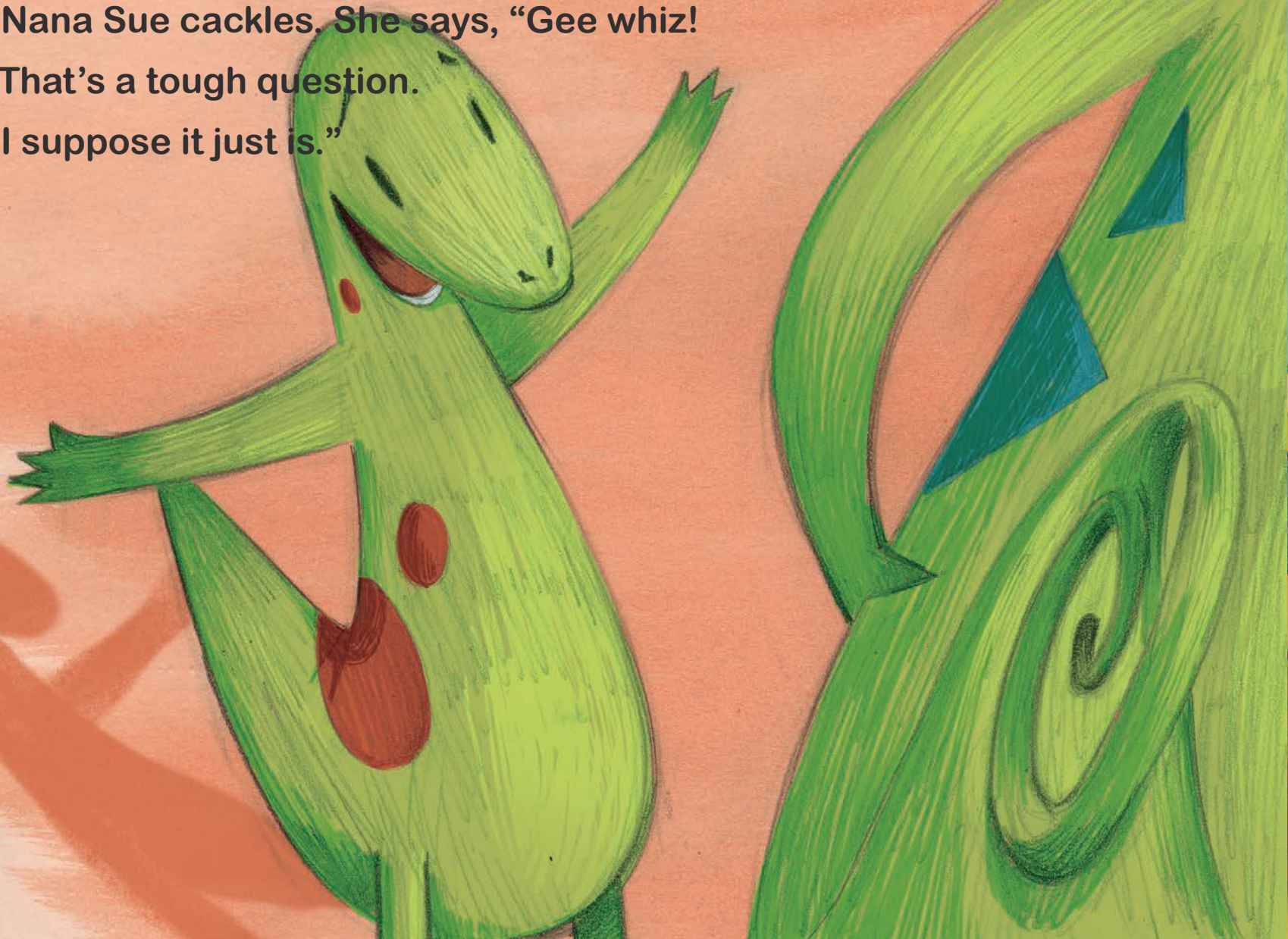
“Nana?” Izzy asks,

“Why is it so far?”

Nana Sue cackles. She says, “Gee whiz!

That’s a tough question.

I suppose it just is.”

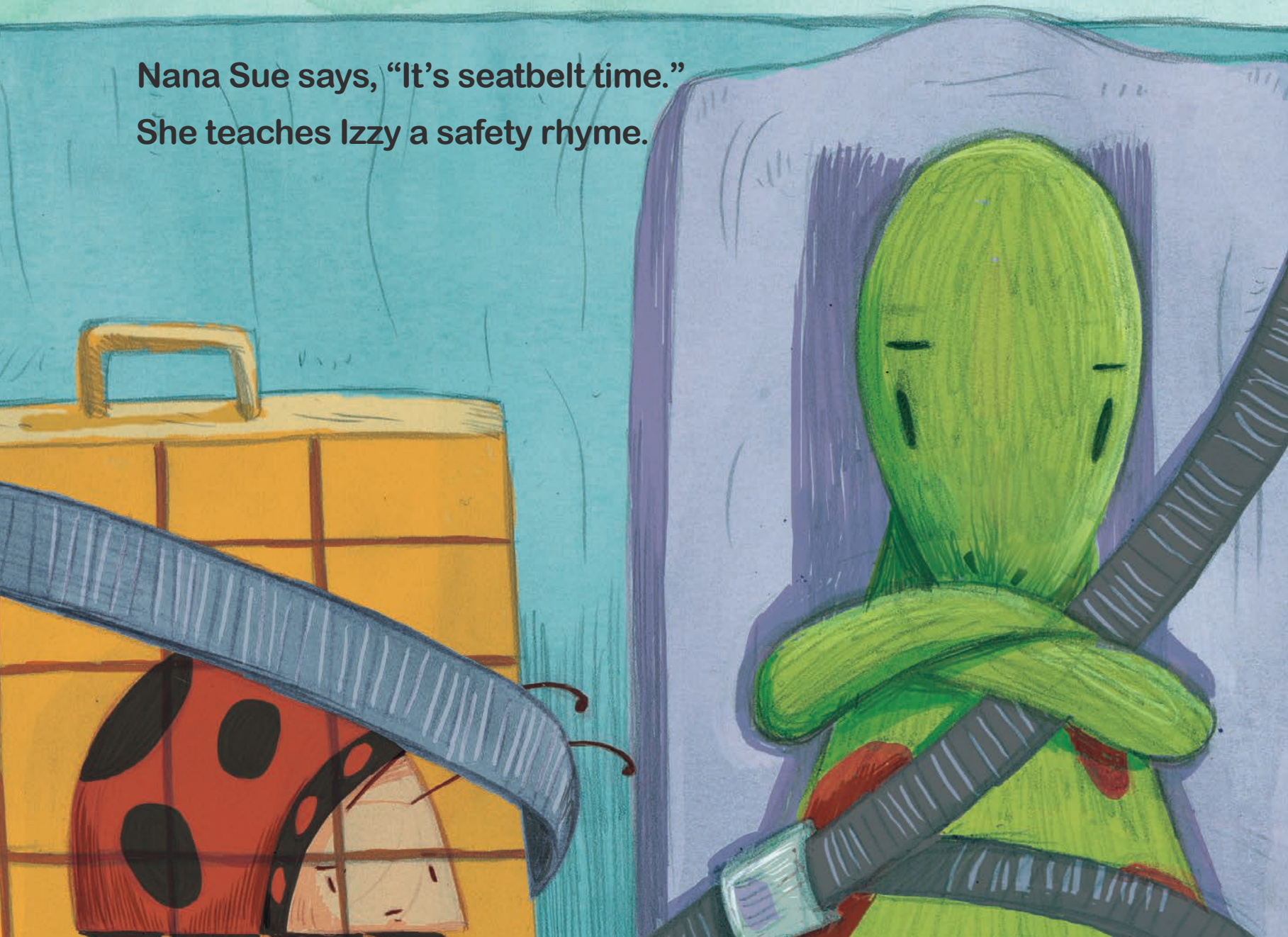


Basil doesn't think travelling is fun.

Izzy's booster seat is warm from the sun.

Nana Sue says, "It's seatbelt time."

She teaches Izzy a safety rhyme.



CLICK CLACK

FRONT *and* BACK,

CLICK CLACK

CLACK

FRONT *and*
BACK,



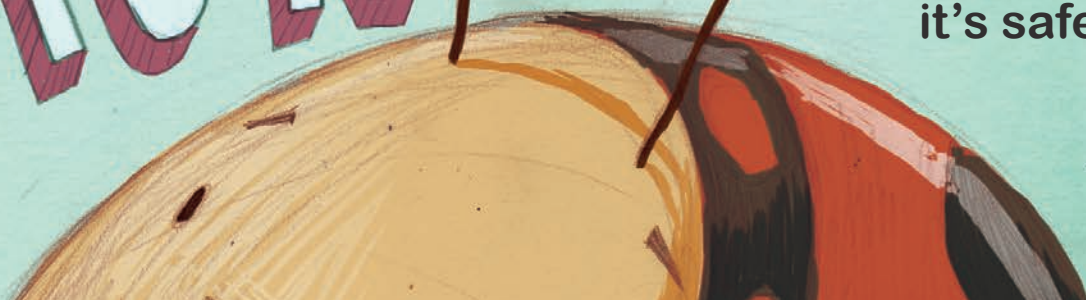
CLICK CLACK

FRONT

and

BACK

and now
it's safe to go!



When they arrive,
Basil's fast asleep.
Out of the window, Izzy sees lots of sheep.
By buckling in tight
Izzy's come to no harm,



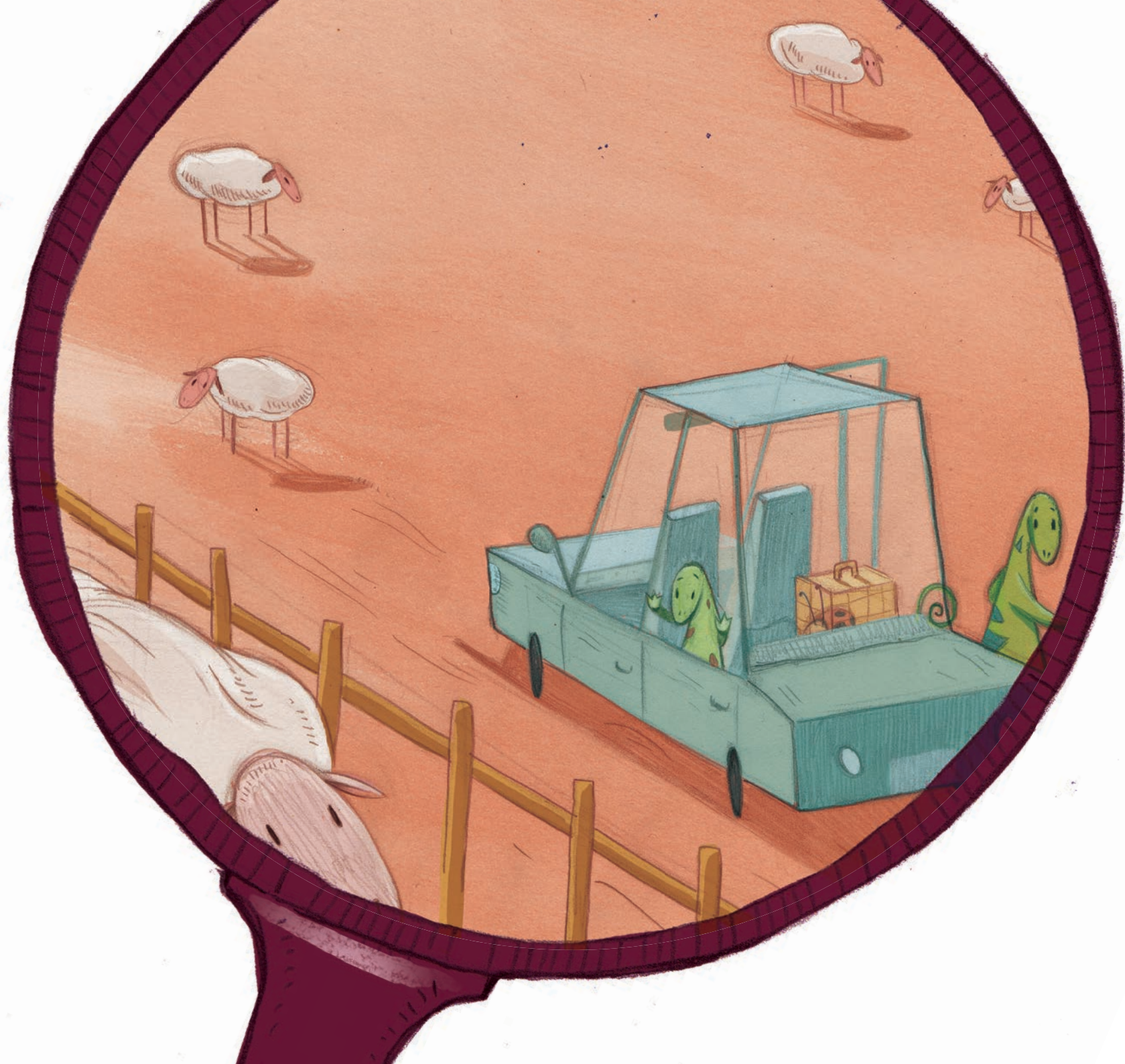
On a long drive with Nana Sue
all the way to the farm.







QUESTIONS — & — ANSWERS



Talk about restraints

Why is Nana Sue putting Izzy's seatbelt on?

Who else is wearing a seatbelt?

Does Nana Sue need to put her seatbelt on?

Do you need to wear a seatbelt?

Talk about getting in and out of the car safely

Which door do you use to get into the car?

Is it safe to get out of the car without mum/dad watching you?

Talk about behaving safely in the car

What's Izzy doing?

Is drawing a good thing to do in the car?

What could you do in the car so you don't disturb me when I'm driving?



SDERA
SCHOOL DRUG EDUCATION & ROAD AWARE



ISBN-13 978-0730743958



9 780730 743958